



WHAT'S THE RIGHT FABRIC FOR YOUR DYE SUB PRINT JOB?

Our Dye Sub process uses an inkjet printer equipped with sublimation dyes to print an image onto transfer paper. The printed transfer paper is then applied to the blank polyester fabric using a heat press.

The combination of heat and pressure cause the sublimation ink to convert into a gas, which is received simultaneously by the polyester fabric. After the heat application is completed (about a minute), the transfer paper is removed and discarded. When the product cools down, the sublimation dye is encapsulated within the surface (instead of on top).

WHY DO WE LIKE DYE SUB?

Dye Sub printing creates a high-resolution, permanent coloration that won't fade, even after multiple washings. Dye Sub can produce colors that are amazingly brilliant. Dye Sub is best when your requirements are for full color or complex artwork.

WHY YOU WOULDN'T CHOOSE DYE SUB.

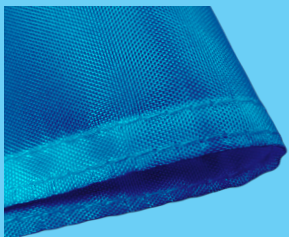
The ink does not penetrate to the back side of the textile. Cost and lead times are higher for smaller runs because it's a two step process and Dye Sub inks are more expensive. Dye Sub only works well on polyester fabric.

DYE SUB 200D DACRON

- 200 Denier polyester material
- Single Sided or Double Face
- Flexible and lightweight
- Maximum print width: 61" or 71"

PERFECT FOR:

- Single or Double Face Flags and Banners
- Golf Flags



DYE SUB 300D

- Wrinkle-resistant material
- Single Sided or Double Face
- Maximum print width: 72"

PERFECT FOR:

- Table Throws
- Table Runners
- Indoor Banners

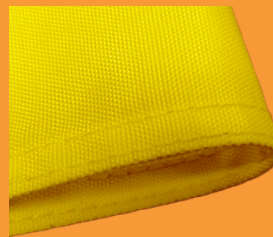


DYE SUB 600D

- 600 Denier polyester material
- Single Sided or Double Face
- Strong and durable
- Maximum print width: 72"
- Warranted up to 120 days in outdoor setting

PERFECT FOR:

- Larger, Stronger Banners, Tents and Avenue Banners



DYE SUB POLY STRETCH

- Machine washable and wrinkle-resistant material
- Single Sided
- Flame retardant
- Maximum print width: 71"

PERFECT FOR:

- Stretch Table Throws
- Easy Tube Banner



DYE SUB COLOR CHARTS

Our printed Dye Sub Color charts display 114 of the most popular Pantone® colors that have been identified by our professional color team. These colors have been profiled as closely as possible to each corresponding solid-coated color in the Pantone Matching System®. We have made this chart available to you in order to greatly simplify the process of choosing colors for custom orders, and to guarantee that we are providing the best color match possible.